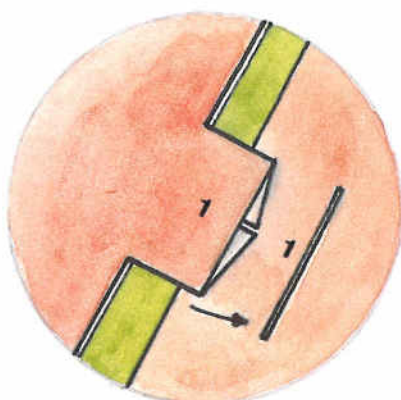
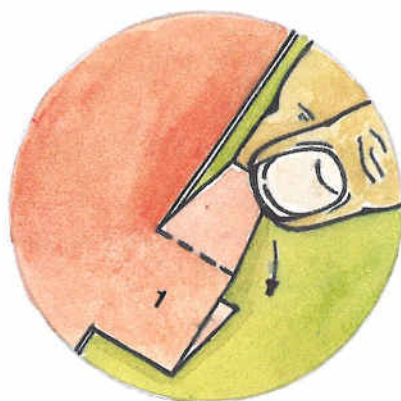


THE ABSOLUTE UNICYCLE MODEL



POP OUT AND SLOT TOGETHER MODEL

Manufacturers of Balls, Big Balls, Spinning Plates, Rings, Knives, Walking Globes, Beanbags, Clothing and Unicycles.

Wholesalers and Retailers of all other quality Juggling and Circus props.

For Mail Order, workshops or Trade enquiries, please visit, or contact:

Absolute Balls Ltd

The Factory, Unit 3H, Northlands Business Park,
Warnham, West Sussex, RH12 3SH
Telephone / fax: 0306 628262



Assembly instructions for your paper model of the Unicycle

The tabs and slots are numbered in the sequence of assembly.

The tabs must be folded inwards to fit through slots and then opened out to lock into position.

Make sure that the score lines are folded on all pieces.

SADDLE: Insert tab 1 (diagram A). Then insert tabs 2 and 3 to bring sides to seat. Insert tongues, 4, 5, 6 and 7 (diagram B).

STEM: Insert tabs 8 and 9 (diagram C).

FORK: Insert tabs 10, 11, 12 and 13 to form fork, then insert tongues 14, 15, 16 and 17 to complete (diagram D).

Attach stem to saddle, tabs 18 and 19.

Attach stem to fork, tabs 20 and 21.

WHEEL AXLE / WHEEL PIECES: Insert wheel axle into inner sides of both wheel pieces with tabs 22, 23, 24 and 25 (diagram E).

Attach wheel pieces together by interlocking edges (diagram F).

LEFT PEDAL PIECE: Insert tabs 26 and 27 (diagram G).

RIGHT PEDAL PIECE: Insert tabs 28 and 29.

LEFT CRANK: Insert tab 30

RIGHT CRANK: Insert tab 31

INNER AXLE AND HOLDING NUTS: Fold and feed through all parts, securing at each section with a holding nut (diagram H).

Make sure that the crank pieces are fixed opposite each other (diagram I) and make sure that both ends of the axle are opened out after inserting.

LEFT PEDAL BOLT: Feed through the crank and pedal piece (diagram J). Make sure that the ends of the spindle are opened out after inserting.

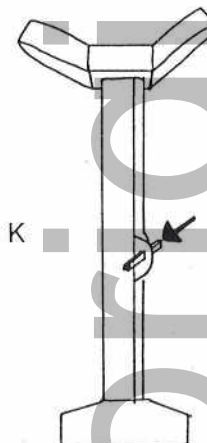
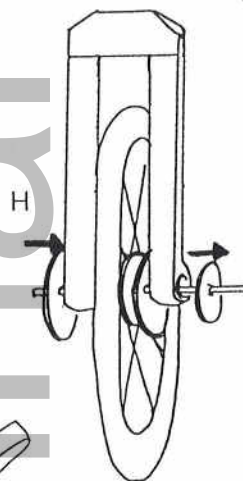
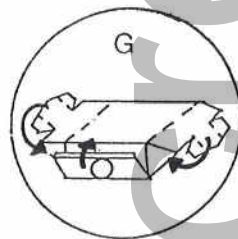
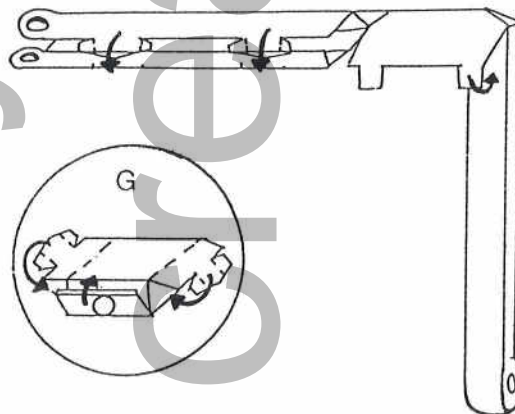
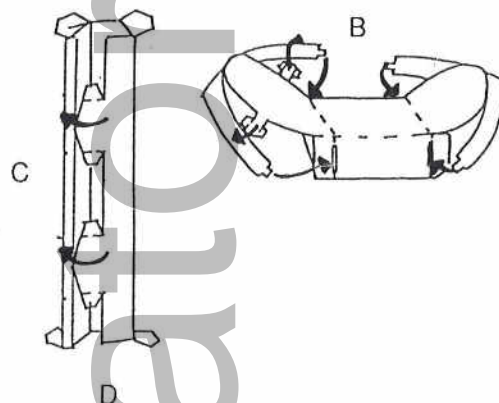
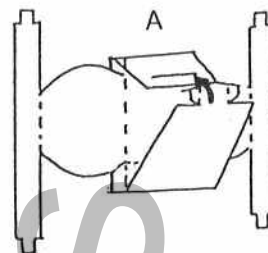
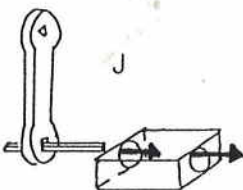
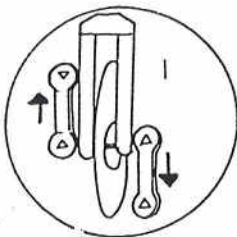
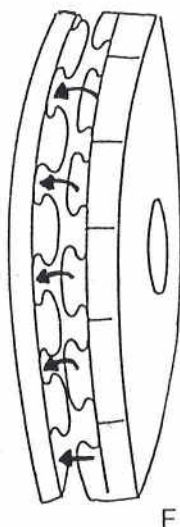
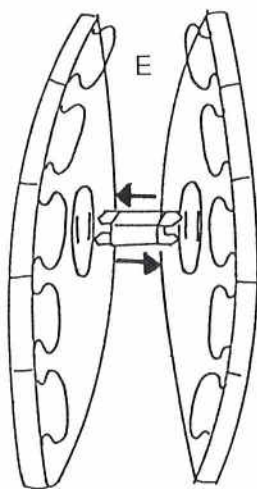
RIGHT PEDAL BOLT: Repeat as left.

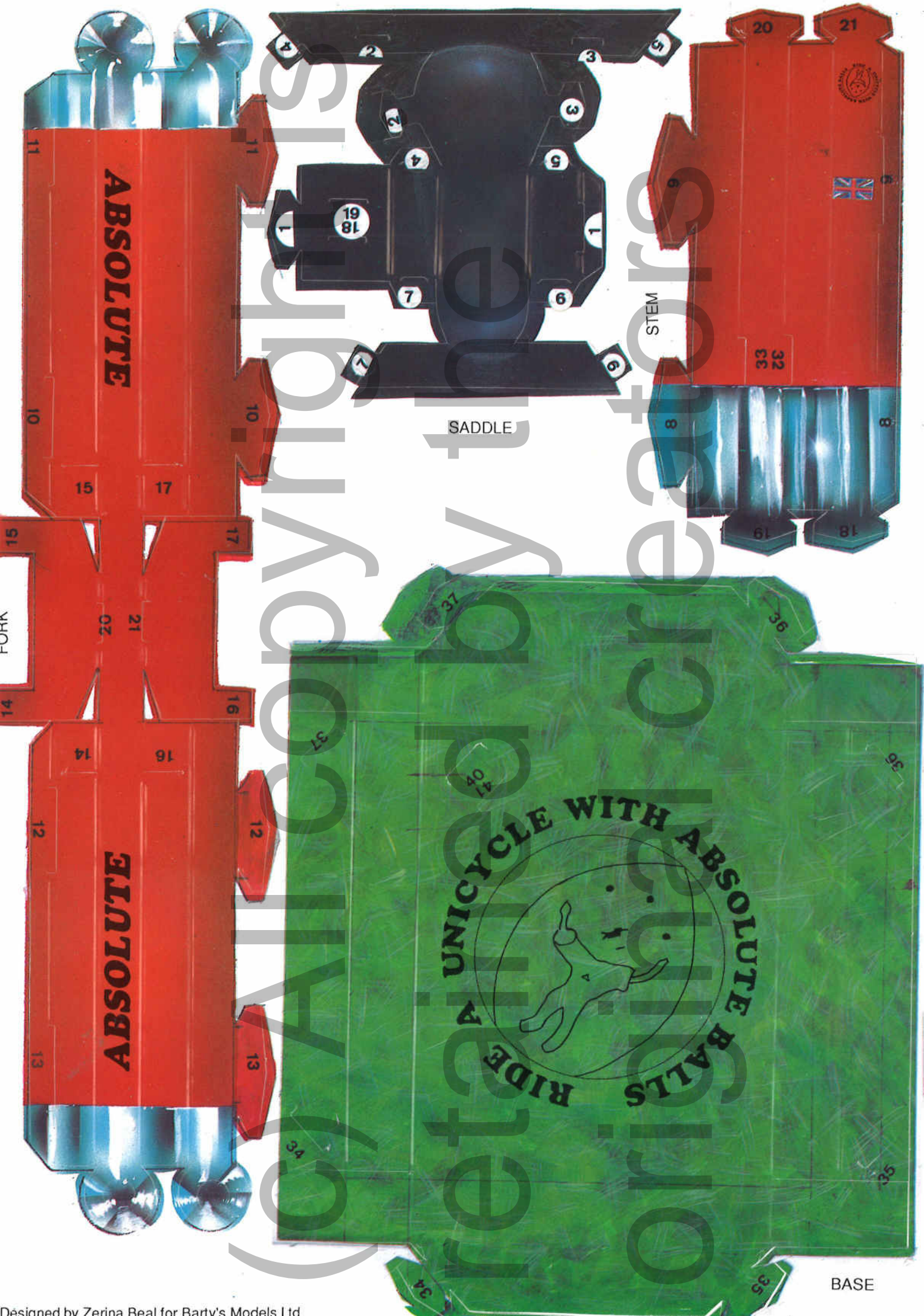
ADJUSTER AND BOLT: Insert tabs 32 and 33 into stem and feed through bolt (diagram K).

BASE: Fold and insert tabs 34, 35, 36 and 37.

POST: Fold and insert tabs 38 and 39. Attach post to base with tabs 40 and 41

Designed by Zerina Beal for Barty's Models Ltd



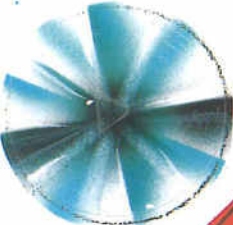


SADDLE

STEM

BASE

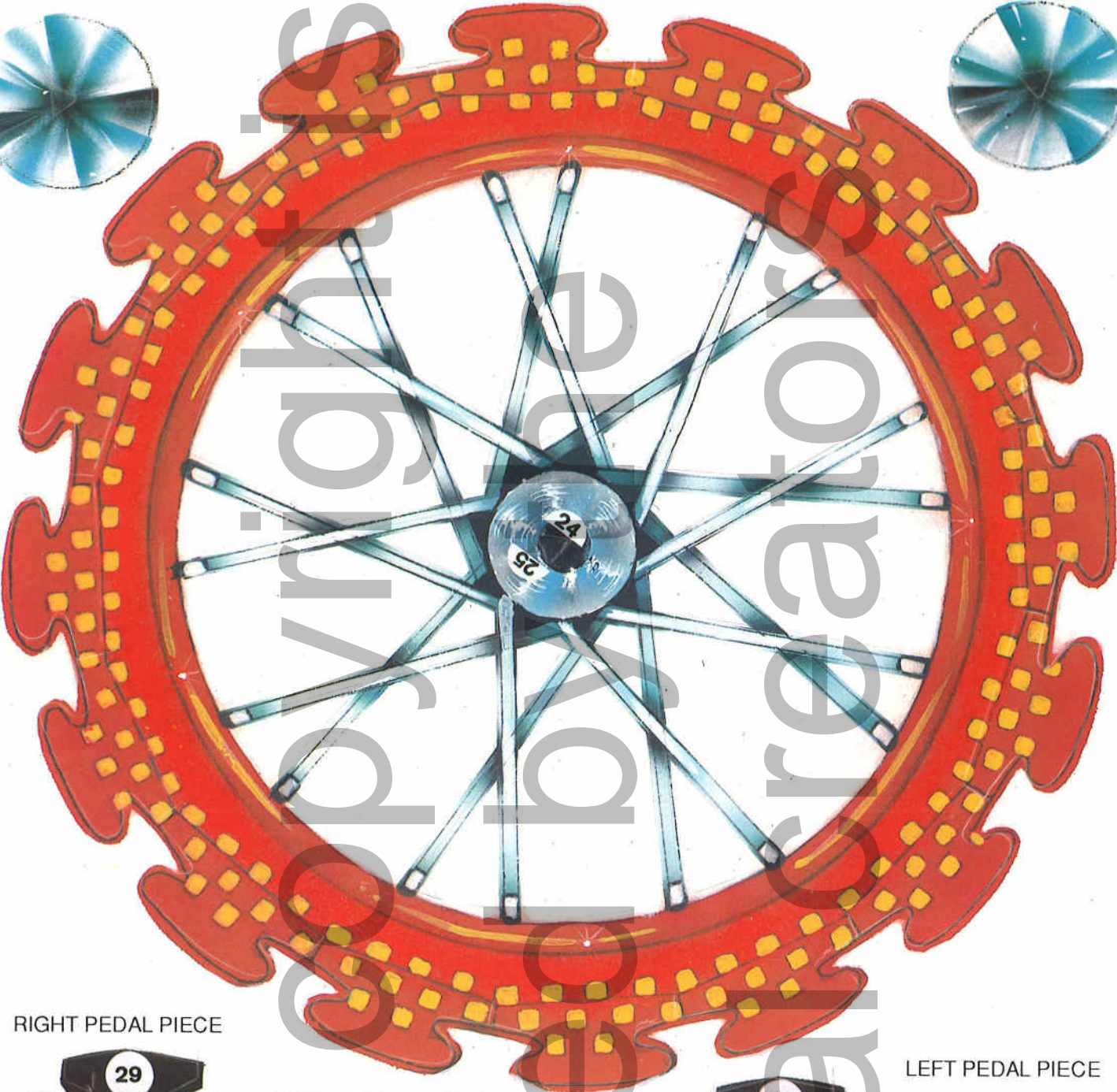
INNER WHEEL NUT



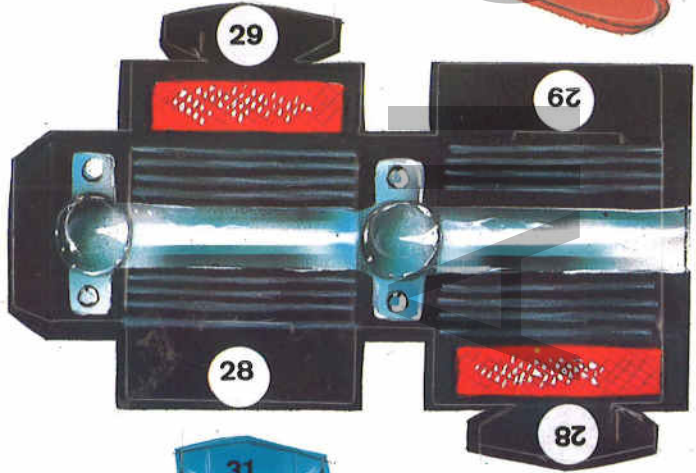
INNER WHEEL NUT



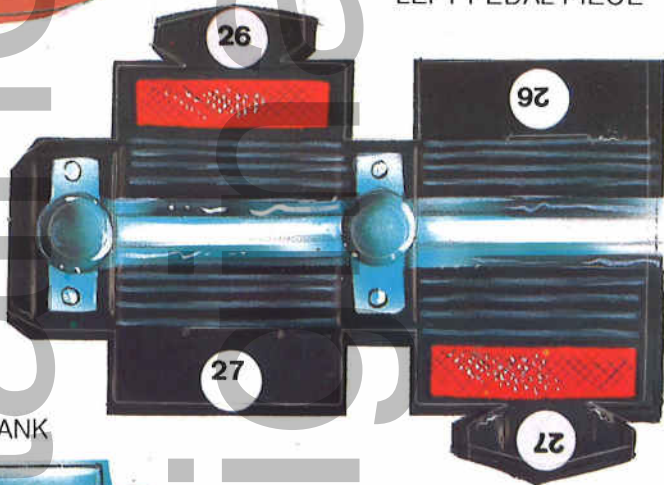
RIGHT WHEEL PIECE



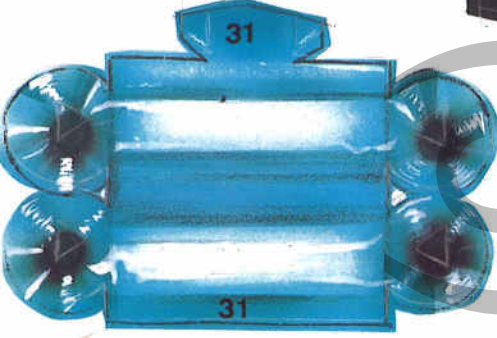
RIGHT PEDAL PIECE



LEFT PEDAL PIECE



LEFT CRANK



RIGHT PEDAL BOLT

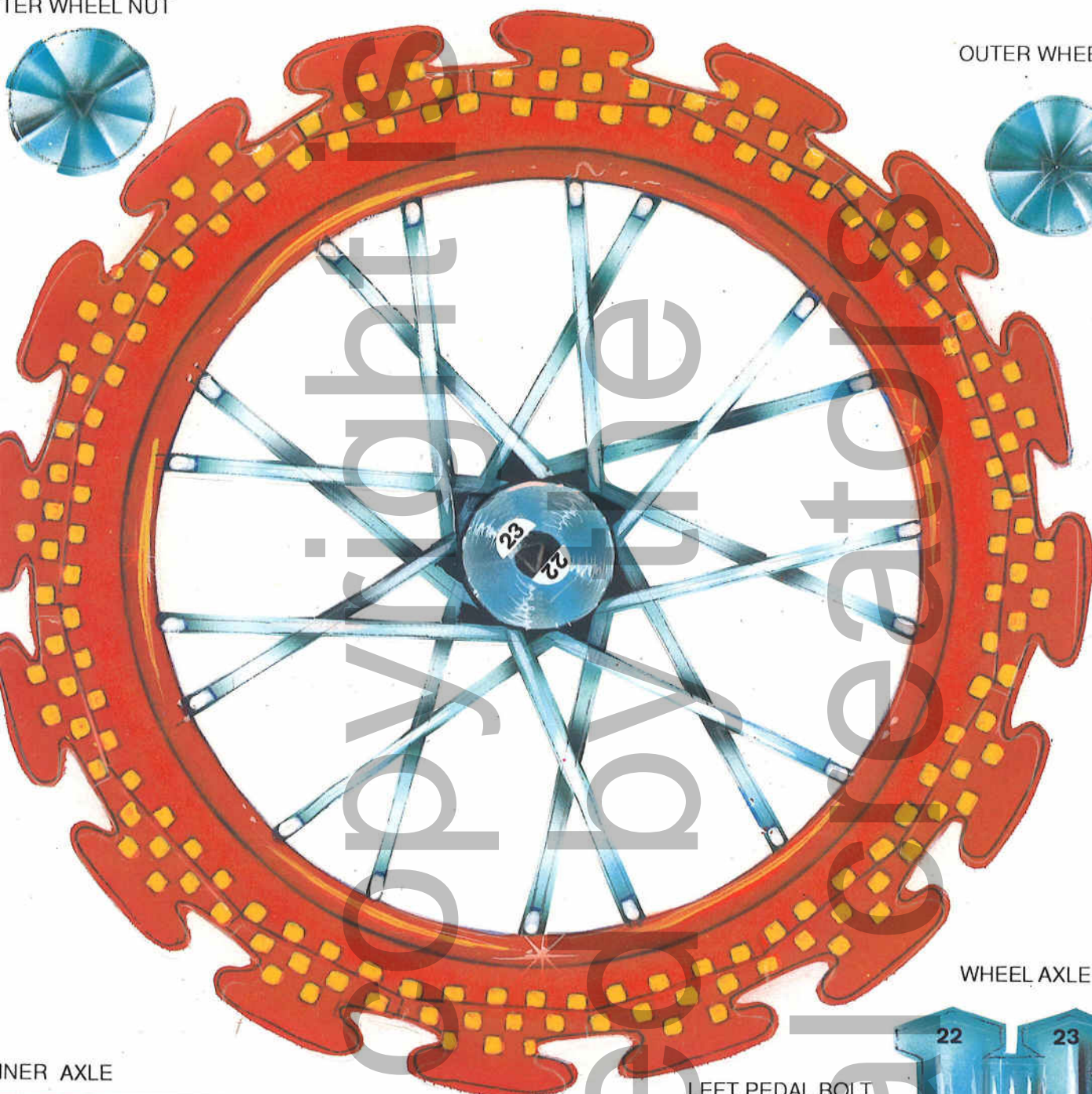


RIGHT CRANK

TER WHEEL NUT



OUTER WHEEL NUT



LEFT WHEEL PIECE

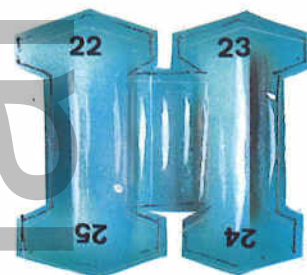
INNER AXLE



LEFT PEDAL BOLT



WHEEL AXLE



ADJUSTER BOLT



ADJUSTER



POST